

2025-2026 Edition



OMUJEVE

Hunting Safaris
Namibia

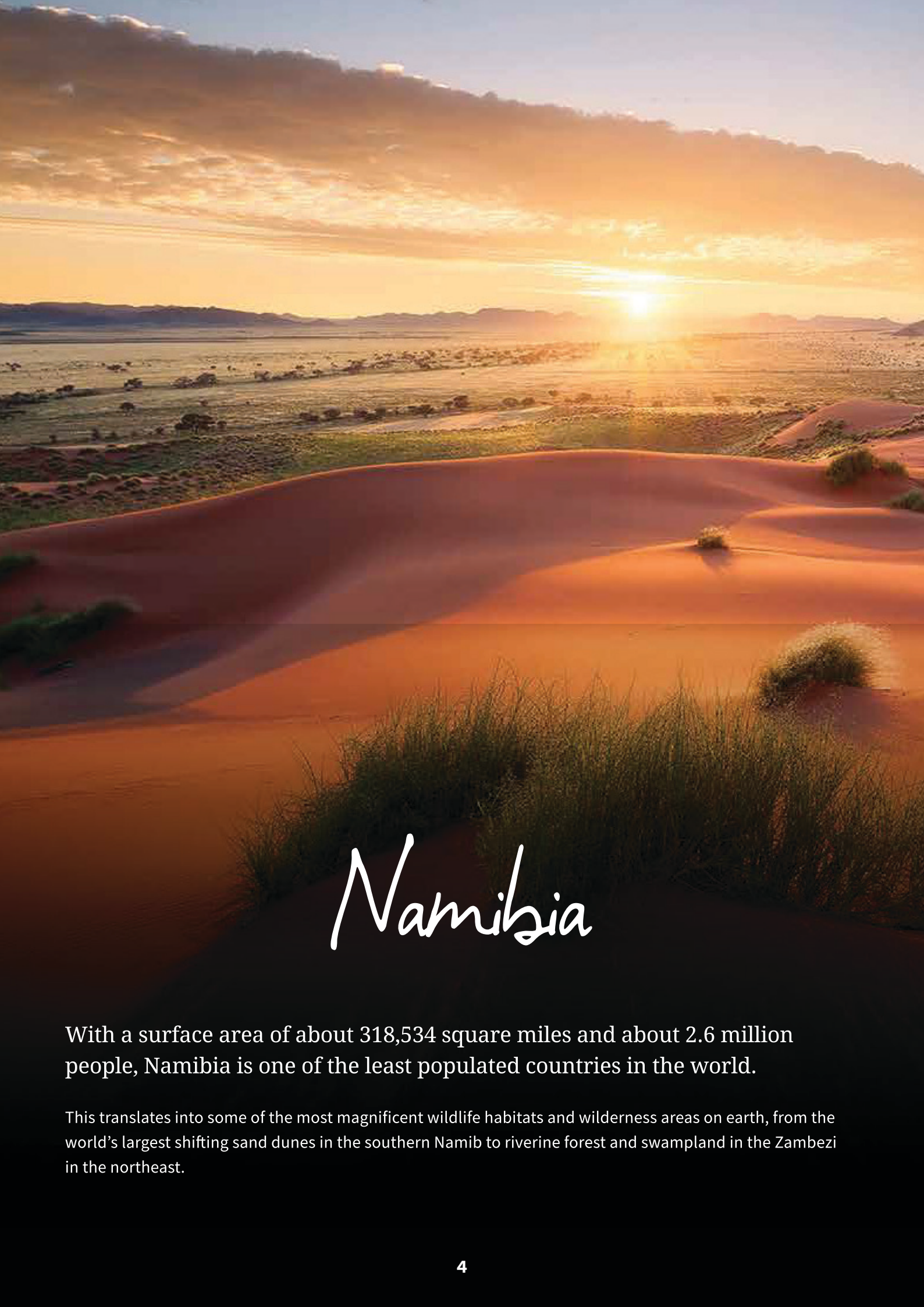


African Safari, the way it's meant to be



CONTENTS

Namibia	4
Origin of hunting	6
Namibia facts	8
Verdwaal hunting lodge	10
Zambezi	14
Ivory camp	16
Sitatunga camp	20
Meals & refreshments	24
Omujeve fishing tours	28
Daily rates - plains game	34
Trophy fees - plains game	36
Trophy hunt packages	38
Plains game trophies - 2024	40
Zambezi conservancy hunts & trophy fees	44
Bwabwata national park & trophy fees	46
Dangerous game trophies - 2024	48
Black and white rhino hunts	54
Management team	56



Namibia

With a surface area of about 318,534 square miles and about 2.6 million people, Namibia is one of the least populated countries in the world.

This translates into some of the most magnificent wildlife habitats and wilderness areas on earth, from the world's largest shifting sand dunes in the southern Namib to riverine forest and swampland in the Zambezi in the northeast.



Namibia offers the visitor a range of remarkable experiences in a variety of astonishing environments – exciting hunts, big trophies, challenging stalks, breathtaking sunrises and sunsets, fierce thunderstorms, boiling-hot days and freezing-cold nights, flat savannahs, rocky mountains, gigantic dunes and majestic rivers...



Origin of hunting

The earliest hunter-gatherers in Southern Africa were the San people. The San have inhabited Southern Africa for at least 30 000 years, proof of this habitation can be found in the rock art found in numerous locations throughout the country.



The San populated South Africa long before the arrival of the Bantu-speaking nations, and thousands of years before the arrival of Europeans. San were traditionally semi-nomadic, moving seasonally within certain defined areas based on the availability of resources such as water, game animals, and edible plants.

Namibia

Omujeve Hunting Safaris has unique lodges and free-range concessions, spanning the length and breadth of Namibia



Namibia by numbers

The country gained independence from South Africa on 21 March 1990. President Dr Hage Geingob leads a multiparty parliament with a democratic constitution. The country's main economic sectors are mining, fishing, tourism (including hunting) and agriculture.

Namibia has 14 vegetation zones supporting some of the richest wildlife in the world.

Big game includes elephant (including, in the Kaokoveld, the world's last surviving population of desert elephants), lion, rhino, buffalo, cheetah, leopard and giraffe. There are 20 antelope species, 240 mammal species (14 endemic), 250 reptile species, 50 frog species and 676 bird species.

- Namibia's official language is English
- Namibia has two international airports: Hosea Kutako and Eros, both in Windhoek
- There are 46 additional airports and airstrips scattered throughout the country
- There are two privately run hospitals in Windhoek with intensive care units
- Medical practitioners and services are available in outlying towns
- All goods and services include 15% VAT, which may be reclaimed by visitors
- Namibia has over 45 000 km of good-quality roads

A photograph of a lodge's exterior at night. The scene features a wooden balcony with a railing, a prominent stone pillar illuminated from within, and a window with the number '3' above it. The foreground is a garden bed with white gravel and green plants. The text 'Verdwaal Hunting Lodge' is overlaid in a white, cursive font.

Verdwaal Hunting Lodge

KHOMAS REGION, NAMIBIA



With over 100k acres and 500 miles of roads, the rolling terrain of Verdwaal Hunting Lodge provides the finest hunting opportunities in central Namibia. Exceptional trophy game abounds, offering all species of native Namibian Antelopes, Roan, Sable as well as predators to include Cheetah, Hyena and Leopard.

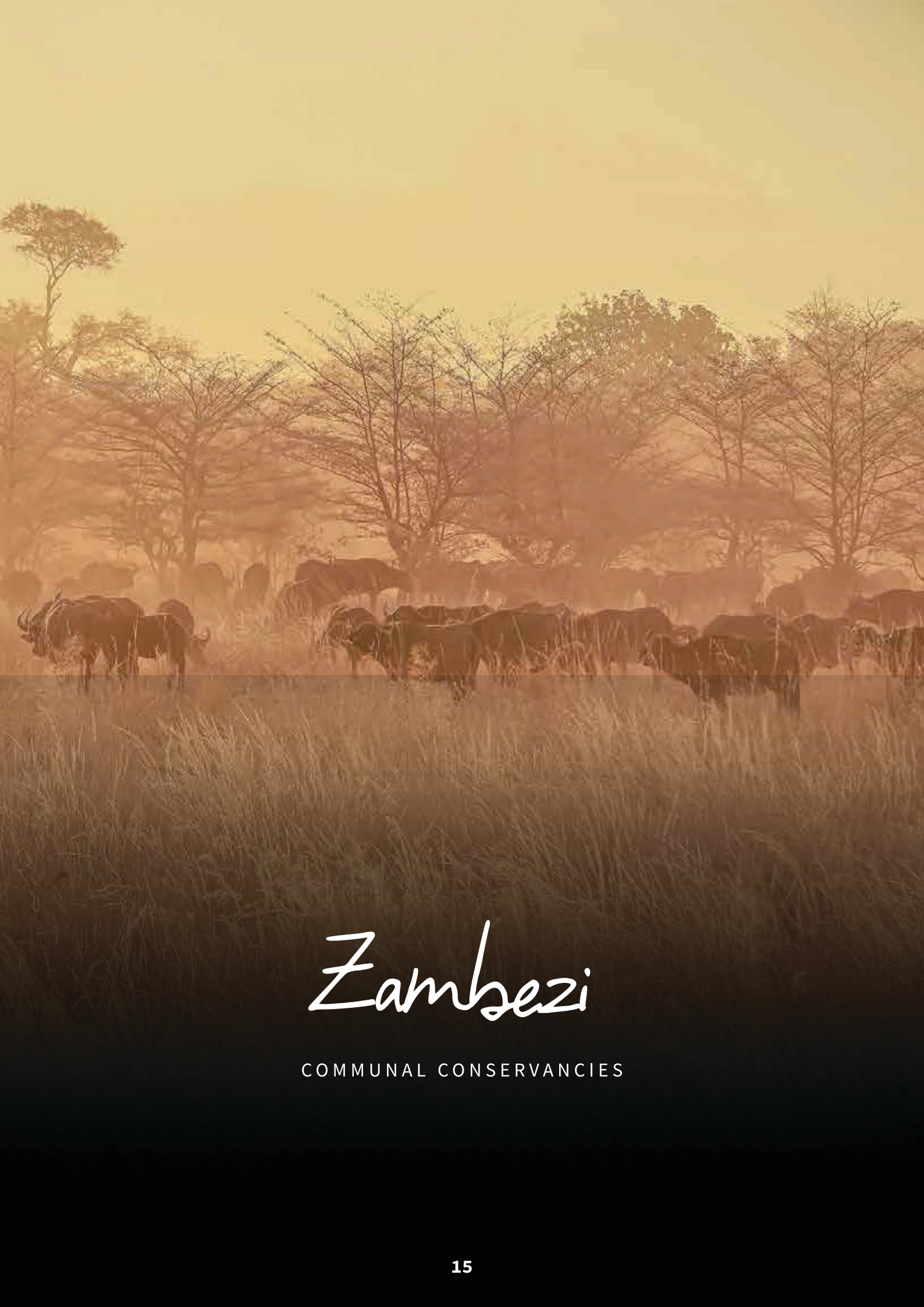


After a successful day in the field, hunters and their guest can return to one of the 6 luxury appointed guest suites and make their way to the multiple lounge areas offering both indoor and outdoor fire pits to recount the day's adventures.









Zambezi

COMMUNAL CONSERVANCIES



Ivory Camp

ZAMBEZI REGION

The Kwando River system is noted for its wildlife, and it's the location of Ivory Camp, offering five canvas-lined chalets. A large dining area, bar and firepit offer a warm and friendly place for evening gatherings.





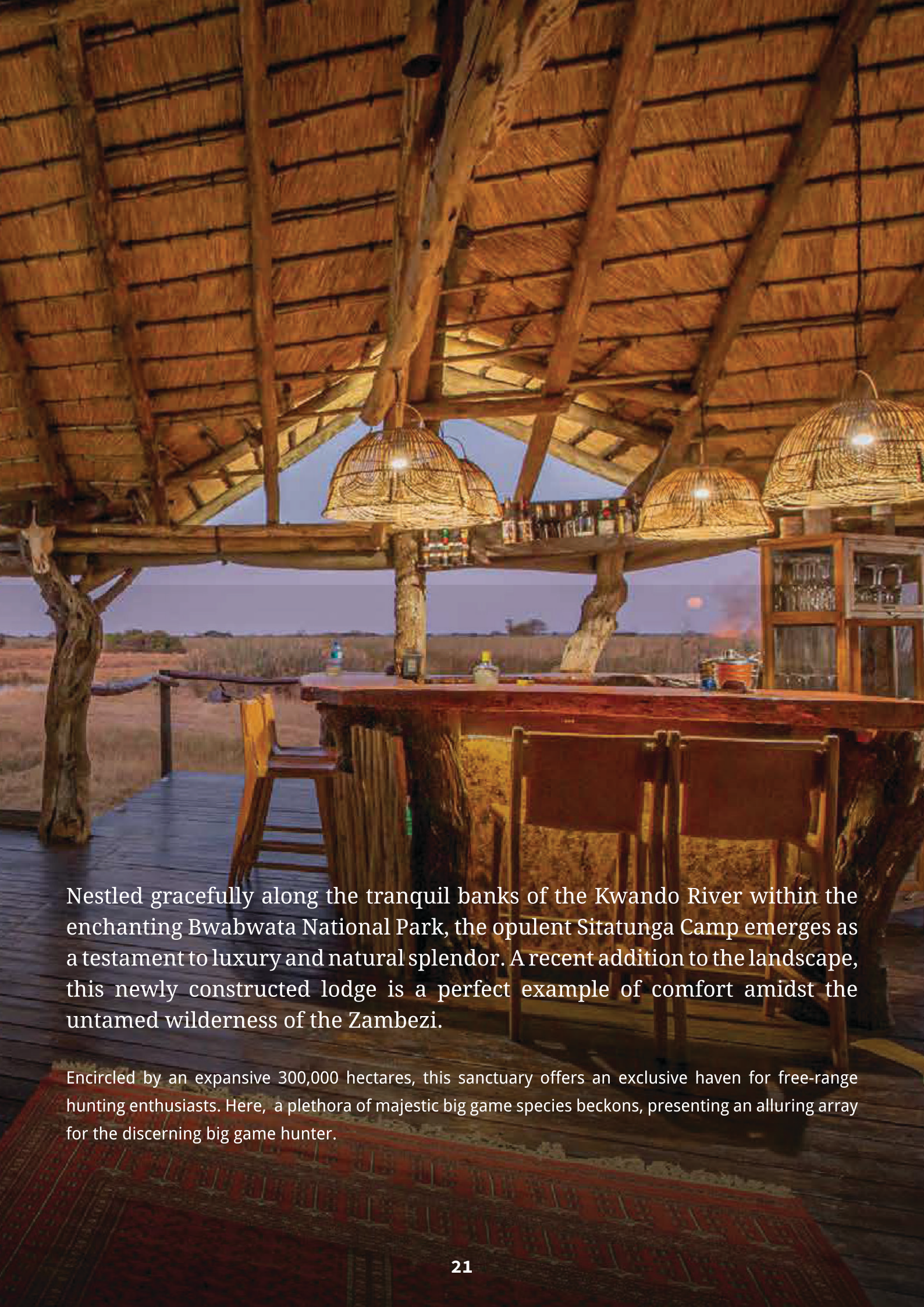




Sitatunga Camp

BWABWATA EAST, ZAMBEZI

In collaboration A.S.S. Hunting Safaris



Nestled gracefully along the tranquil banks of the Kwando River within the enchanting Bwabwata National Park, the opulent Sitatunga Camp emerges as a testament to luxury and natural splendor. A recent addition to the landscape, this newly constructed lodge is a perfect example of comfort amidst the untamed wilderness of the Zambezi.

Encircled by an expansive 300,000 hectares, this sanctuary offers an exclusive haven for free-range hunting enthusiasts. Here, a plethora of majestic big game species beckons, presenting an alluring array for the discerning big game hunter.







Meals & Refreshments

Omujeve Hunting Safaris offers a sensational dining experience. Our food and wine menus are full flavor experiences. Our food philosophy has always been an emphasis on warm, hearty meals which is why our guests won't ever go hungry.



We choose wines of exceptional rank from the Cape wine route, which complement our social atmosphere on cool or warm nights. Expect rich and seductive meals prepared with home-cured game and seasonal vegetables. Omujeve ticks all the boxes in terms of fine cuisine, setting and atmosphere. Relax and enjoy a night of camaraderie around our table as stories from the field are retold.







Omujeve fishing tours

Shore fishing along the Namibian coast is an extremely popular and unique all-year-round experience. Streenbras, Cob, Galjoen and Backtail are just some of the incredible species you will find here.



Alternatively, test your mettle on the Zambezi River, Africa's fourth largest river and home to one of the continent's most sought-after freshwater game fish, the Tigerfish. Bream and large Catfish species are also abundant and ready for you to hook. Let us create your personalised fishing itinerary for a truly memorable fishing adventure.









DAILY RATES INCLUDE



All plains game hunting permits



The services of a hunting guide, trackers and skinners



Hunting vehicles & transport to and from airport



Field preparation of trophies



Accommodation at any of Omujeve Hunting Safaris lodges or camps



All meals and local beverages, wines, spirits and beers



Daily laundry



Wi-Fi connection at Omujeve Lodge

DAILY RATES EXCLUDE



Transport cost to Namibia



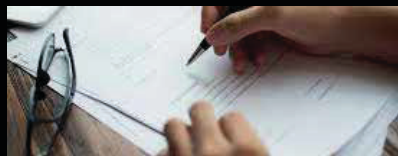
International phone calls



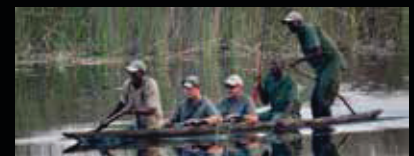
Insurance of any kind



Taxidermy, dip & pack fees and shipping of trophies



Permits required by any country but Namibia



Gratuities to staff



Trophy fees for game taken or wounded



VAT tax on cull animals

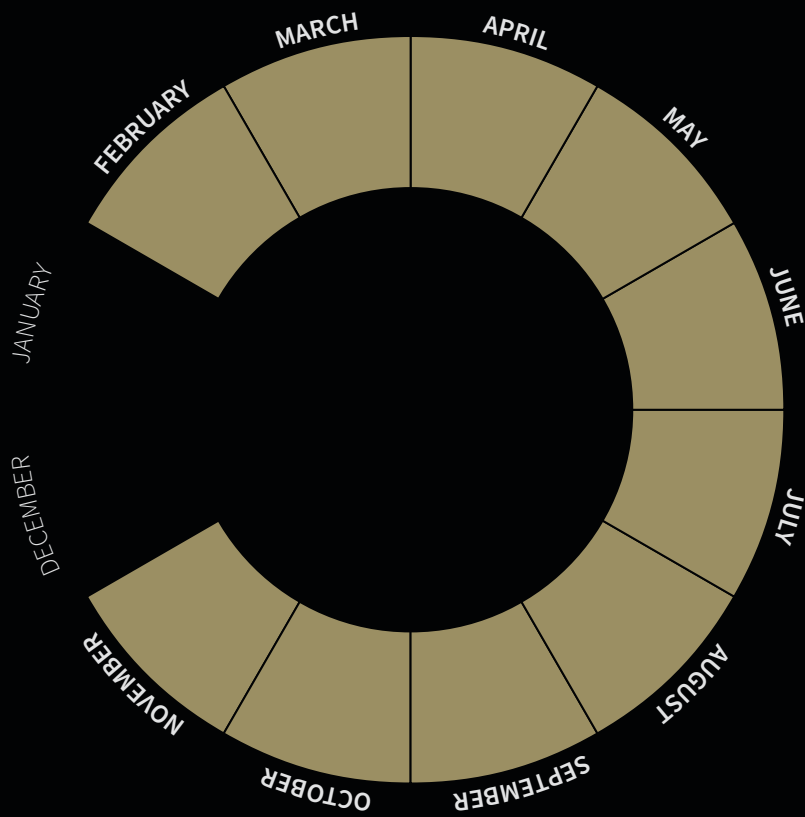


Rifle rental and ammo



VAT tax on accommodation

DAILY RATES - PLAINS GAME PRIVATE LAND



Hunting season:

February - November

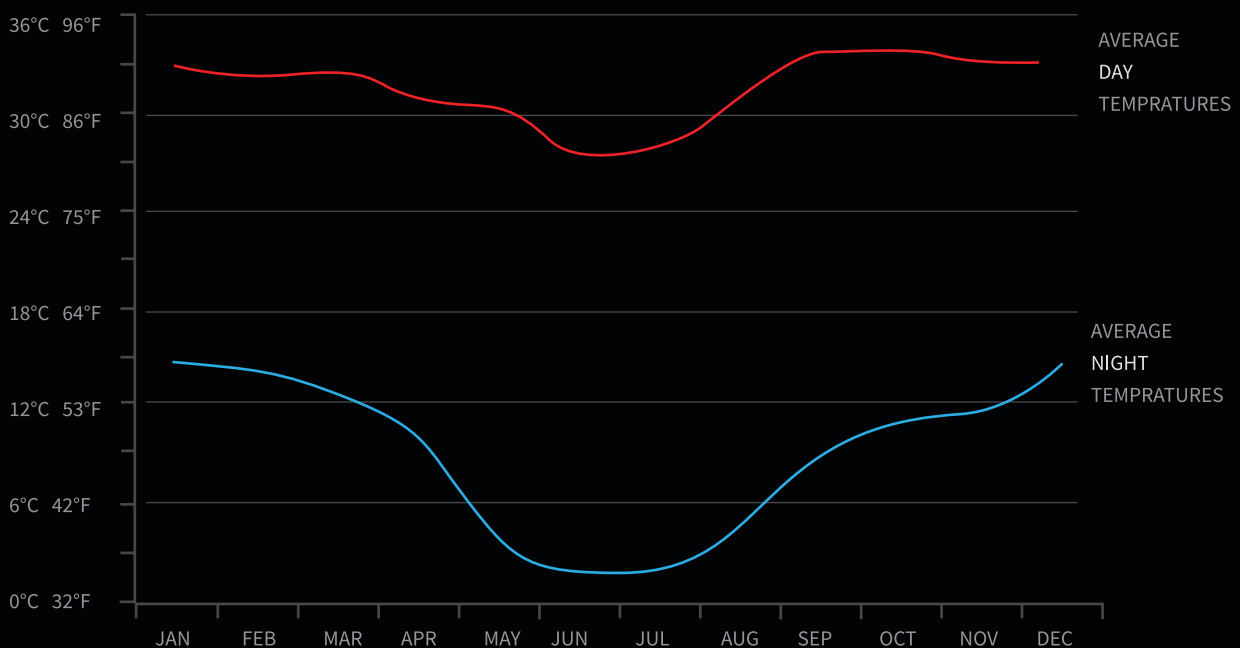
1 Hunter / 1 PH US\$ 450.00 p/d

2 Hunters / 1 PH US\$ 350.00 p/d

Observer US\$ 250.00 p/d

Excluding VAT tax

CLIMATE AND WEATHER IN NAMIBIA



TROPHY FEES

Private land only



Baboon: US\$ 250



Black-backed jackal: US\$ 0



Blesbuck - Common: US\$ 850



Blesbuck - White: US\$ 1,250



Blesbuck - Yellow: POR



Damara Dik-Dik: US\$ 2,500



Caracal cat: US\$ 1,200



Cheetah: US\$ 12,000



White Flank Impala: US\$ 4,500



Duiker: US\$ 450



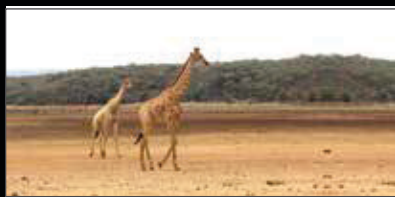
Eland - Cape: US\$ 2,850



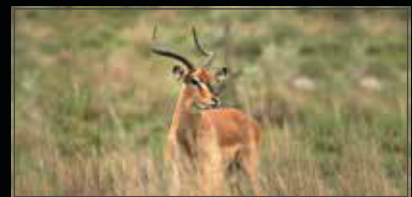
Gemsbuck - Kalahari: US\$ 850



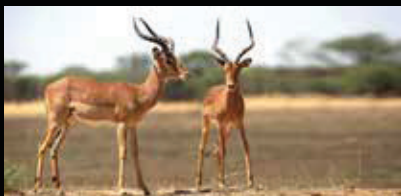
Gemsbuck - Golden: US\$ 3,500



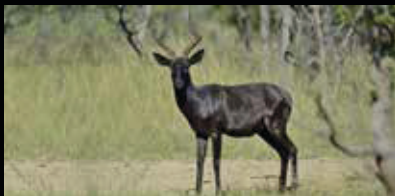
Giraffe: US\$ 4,000



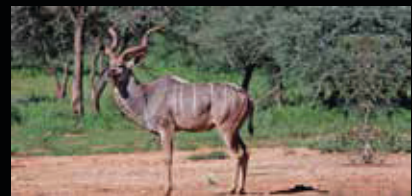
Impala - Black Faced: US\$ 1,500



Impala - Common: US\$ 650



Impala - Black: US\$ 2,500



Kudu - Southern Greater: US\$ 3,500

TROPHY FEES

Private land only



Lechwe: US\$ 3,500



Nyala: US\$ 4,500



Red Hartebeest: US\$ 950



Roan: US\$ 8,500*



Sable: US\$ 6,000*



Springbok - Black: US\$ 950



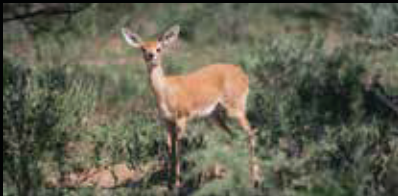
Springbok - Kalahari: US\$ 550



Springbok - White: US\$ 1,800



Springbok Copper US\$ 1,250



Steenbok: US\$ 500



Tsessebe: US\$ 4,000*



Warthog: US\$ 500



Waterbuck: US\$ 1,750



Wildebeest - Black: US\$ 1,750



Wildebeest - Blue: US\$ 900



Zebra - Burchell: US\$ 1,150



Zebra - Hartmann: US\$ 1,500



Game Birds: US\$ 25

*Only on availability

TROPHY HUNT PACKAGES

PACKAGE ONE:

5 Day Trophy Hunt with 5 Trophies

Price: US\$ 4,999 - one hunter / one guide

Price: US\$ 4,499 - two hunters / one guide (price per hunter)



1 x Springbok



1 x impala



1 x Gemsbok



1 x Blue Wildebeest



1 x Warthog



PACKAGE TWO:

7 Day Trophy Hunt with 7 Trophies

Price: US\$ 7,499 - one hunter / one guide

Price: US\$ 6,999 - two hunters / one guide (price per hunter)



1 x Springbok



1 x Impala



1 x Gemsbok



1 x Blue Wildebeest



1 x Red Hartebeest



1 x Warthog



1 x Zebra



PACKAGE THREE:

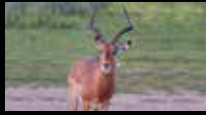
10 Day Trophy Hunt with 9 Trophies

Price: US\$ 9,999 – one hunter / one guide

Price: US\$ 8,999 – two hunters / one guide (price per hunter)



1 x Springbok



1 x Impala



1 x Gemsbok



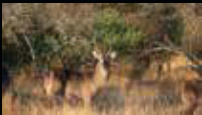
1 x Blue Wildebeest



1 x Red Hartebeest



1 x Warthog



1 x Waterbuck



1 x Eland



1 x zebra



PLEASE NOTE:

- The package prices include all daily rates and trophies.
- Hunt can be upgraded by pricelist only.
- Hunt will take place from Omujeve and Schonbrunn Lodge.
- No trophies may be exchanged.



PLAINS GAME TROPHIES - 2024





PLAINS GAME TROPHIES - 2024





ZAMBEZI CONSERVANCY HUNTS

SPECIES	Miniumum Days	Per day	Total
Elephant/Leopard/Buffalo & plainsgame	21 ●	US\$ 2,250.00	US\$ 47,250.00
Leopard/Buffalo & plainsgame	14 ●	US\$ 1,850.00	US\$ 25,900.00
Elephant/Buffalo & plainsgame	10 ●	US\$ 1,850.00	US\$ 18,500.00
Buffalo/Hippo/Croc & plainsgame	14 ●	US\$ 1,850.00	US\$ 25,900.00
Own use Elephant & plainsgame	10 ●	US\$ 1,250.00	US\$ 12,500.00
Buffalo/Hippo or Croc & plainsgame	10 ●	US\$ 1,650.00	US\$ 16,500.00
Buffalo & plainsgame	7 ●	US\$ 1,350.00	US\$ 9,450.00
Plainsgame	7 ●	US\$ 850.00	US\$ 5,950.00
Observer	1	US\$ 350.00	US\$ 350.00

DAILY RATES INCLUDE



All plains game hunting permits



The services of a hunting guide, trackers and skinners



Hunting vehicles & transport to and from airport



Field preparation of trophies



Accommodation at any of Omujeve Hunting Safaris lodges or camps



All meals and local beverages, wines, spirits and beers



Daily laundry



Wi-Fi connection at Omujeve Lodge

DAILY RATES EXCLUDE



Transport cost to Namibia



International phone calls



Insurance of any kind



Taxidermy, dip & pack fees and shipping of trophies



Permits required by any country but Namibia



Gratuities to staff



Trophy fees for game taken or wounded



VAT tax on cull animals

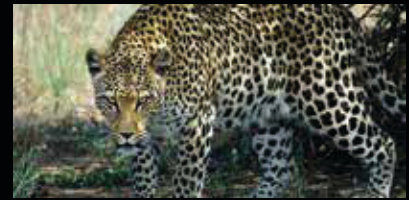


Rifle rental and ammo



VAT tax on accommodation

ZAMBEZI CONSERVANCY TROPHY FEES



Leopard: US\$ 15,000



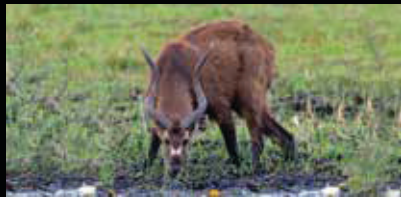
Elephant - Trophy: US\$ 25,000



Elephant - Non Trophy: US\$ 9,500



Cape Buffalo: US\$ 9,500



Sitatunga: US\$ 25,000



Hippo: US\$ 12,500



Croc: US\$ 12,500



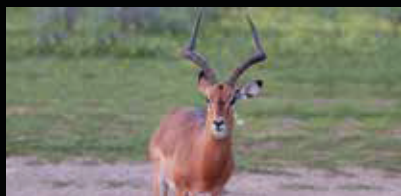
Duiker: US\$ 450



Eland: US\$ 3,500



Blue Wildebeest: US\$ 900



Impala: US\$ 595



Kudu: US\$ 3,500



Lechwe: US\$ 3,500



Reedbuck: US\$ 2,500



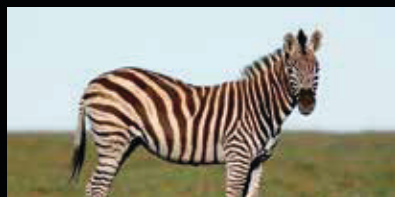
Roan: US\$ 12,500



Sable: US\$ 9,500



Warthog: US\$ 450



Chapamnn Zebra: US\$ 2,500



Zebra - Burchell: US\$ 950



BWABWATA NATIONAL PARK

SPECIES	Minimum Days	Per day	Total
Elephant/Leopard/Buffalo & plainsgame	21 ●	US\$ 3,500.00	US\$ 73,500.00
Leopard/Buffalo & plainsgame	14 ●	US\$ 2,750.00	US\$ 38,500.00
Elephant/Buffalo & plainsgame	14 ●	US\$ 2,750.00	US\$ 38,500.00
Buffalo/Croc/Hippo & plainsgame	14 ●	US\$ 2,000.00	US\$ 28,000.00
Buffalo/Hippo or Croc & plainsgame	10 ●	US\$ 1,850.00	US\$ 18,500.00
Buffalo & plainsgame	7 ●	US\$ 1,850.00	US\$ 11,550.00
Plainsgame	7 ●	US\$ 1000.00	US\$ 7,000.00
Observer	1	US\$ 350.00	US\$ 350.00

DAILY RATES INCLUDE



All plains game hunting permits



The services of a hunting guide, trackers and skinners



Hunting vehicles & transport to and from airport



Field preparation of trophies



Accommodation at any of Omujeve Hunting Safaris lodges or camps



All meals and local beverages, wines, spirits and beers



Daily laundry



Wi-Fi connection at Omujeve Lodge

DAILY RATES EXCLUDE



Transport cost to Namibia



International phone calls



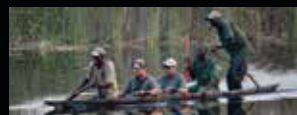
Insurance of any kind



Taxidermy, dip & pack fees and shipping of trophies



Permits required by any country but Namibia



Gratuities to staff



Trophy fees for game taken or wounded



VAT tax on cull animals



Rifle rental and ammo



VAT tax on accommodation

BWABWATA NATIONAL PARK TROPHY FEES



Elephant - Trophy: US\$ 45,000



Leopard: US\$ 15,000



Cape Buffalo: US\$ 18,500



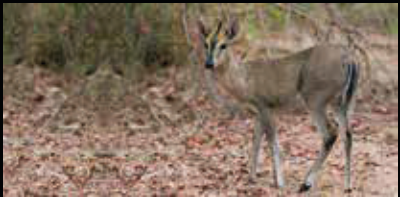
Sitatunga: US\$ 25,000



Hippo: US\$ 12,500



Croc: US\$ 12,500



Duiker: US\$ 450



Eland: US\$ 3,500



Steenbok: US\$ 450



Impala: US\$ 650



Kudu: US\$ 3,500



Lechwe: US\$ 3,500



Reedbuck: US\$ 2,500



Roan: US\$ 12,500



Sable: US\$ 9,500



Warthog: US\$ 450



Chapamnn Zebra: US\$ 2,500



Zebra - Burchell: US\$ 950



DANGEROUS GAME TROPHIES - 2024





DANGEROUS GAME TROPHIES - 2024





DANGEROUS GAME TROPHIES - 2024





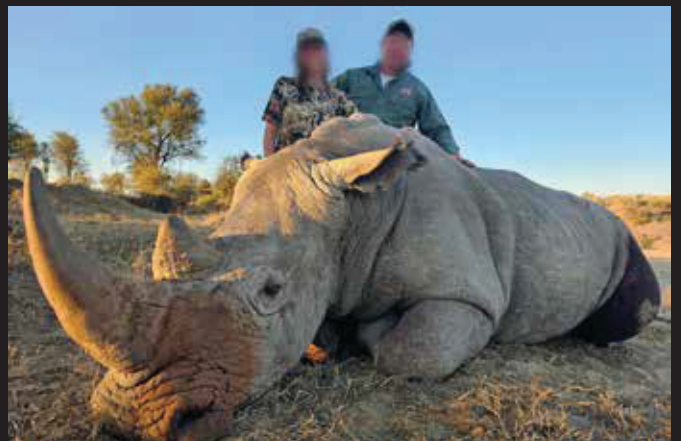
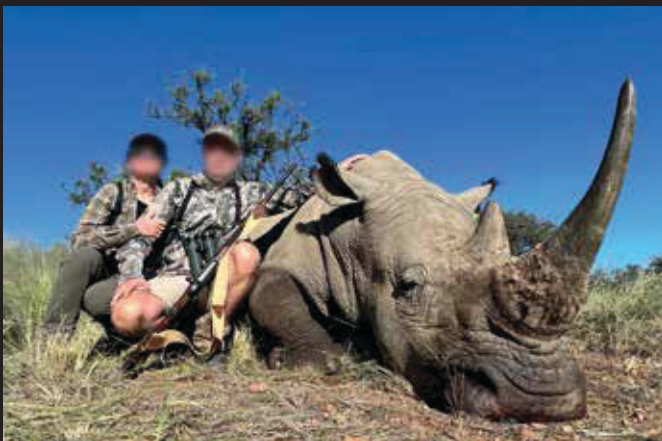
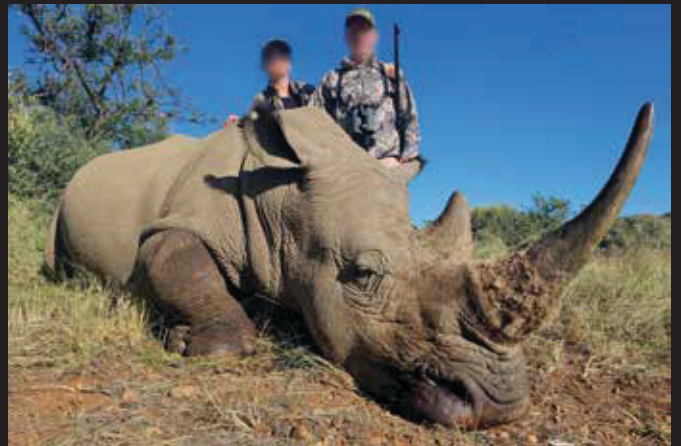
BLACK RHINO HUNTS

Black rhino's are priced on request.



WHITE RHINO HUNTS

White rhino's are priced on request.



Management Team



The Kruger family:
Chane, Charmoni, Kayla and Corné



Nic & Elsada Kruger
Owners of Omujeve



Ali Ipinge
Marketing & Communications

Omujeve Hunting Safaris is run by the Kruger family, whose tenure in Namibia goes back five generations, and who are passionate hunters themselves.

Father Nic, mother Elsada, and eldest son and professional hunter Corne, with his wife Charmoni and their two daughters, live on site and are always available to make your visit as memorable as possible.

Our PH's will not only guide you in the field, but also become your best friend. They are highly skilled and passionate about the natural environment and animal behavior.



Ockert Bamm
Big Game PH



Gideon Cloete
Big Game PH



Sarel van Wyk
Hunting Guide

CONTACT DETAILS:

Cell: +264 81 129 3986
Email: bookings@omujevohuntingsafaris.com
or: cornek79@gmail.com
Website: www.omujevehuntingsafaris.com



